

UV-25 Universal Swivel Sheave

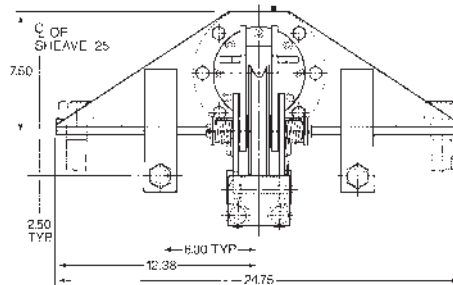
Permits winches to pull wire rope from any angle within the operational limits of a maximum rated winch line pull of 25,000 lbs.-force (111.2 kN) for underground applications and 14,000 lbs.-force (62.3 kN) for overhead applications.

- ▶ Applications include telephone and utility vehicles, mining, logging and general industry
- ▶ The UV-25 sheave assembly is a ruggedly constructed weldment designed for safety, ease of use, long life and minimum maintenance
- ▶ Designed to swivel 360° on anti-friction hardened steel balls
- ▶ Accepts wire rope up to 9/16 in. (14 mm) in diameter
- ▶ Constructed from steel plates, the unit features a hardened steel sheave with a roller bearing
- ▶ Features guide rollers that when removed allow the passage of the eye of the winch line through the unit
- ▶ Torsion springs and hardened steel rollers on the swivel head provide constant wire rope contact
- ▶ Can be mounted in many locations, including the tail shelves of utility vehicles
- ▶ Easily installed and dismantled from the tail shelf using GMP mounting sockets (15836) and hardened steel bolts (17746). (Two of each items required)

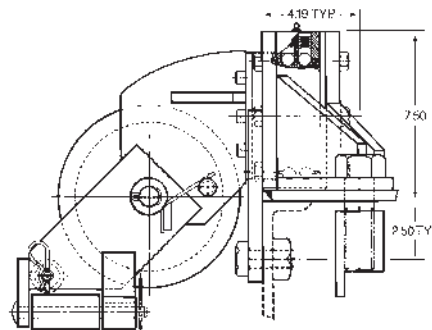
P/N 70202 Weight: 130 lbs. (59 kgs)



Maximum capacity
25,000 lbs.-force
(111.2 kN) bare
drum pull.



UV-25 Universal Swivel Sheave Front View



V-25 Universal Swivel Sheave Side View

UV 7.4 Universal Swivel Sheave

This swivel sheave was designed to operate with the Adams CD Lite Winch, which has a maximum rated load of 7,400 lbs (32.9 kN).

- ▶ The UV 7.4 will swivel 360° continuously allowing the winch to pull from any angle in a wide range of applications within it's load capacity
- ▶ Sheave assembly is a rugged steel weldment designed for long life and low maintenance
- ▶ Sheave assembly will operate with 1/4 in. and 3/8 in. (6 mm and 10 mm) dia. wire rope
- ▶ Designed to be mounted in a receiver socket, the unit can be quickly removed and stored when not in use

P/N 70651 Weight: 50 lbs. (22.7kgs.)

