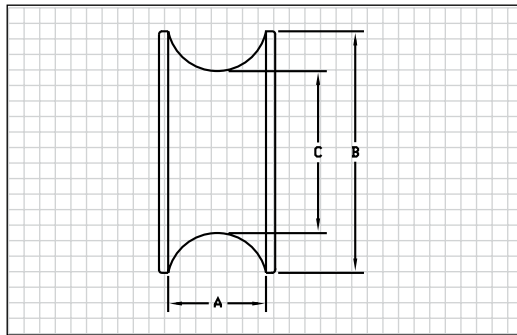


Cable Sheaves

These sheaves are used in placing and removing underground cables.

- ▶ Constructed from high strength aluminum alloy, and have self lubricating bushings for long, maintenance free lives
- ▶ All holes sizes are 1-3/8 in. (35 mm) dia. for 1-5/16 in. (33 mm) pin
- ▶ These units are available in 11 in. (280 mm), 20 in. (510 mm) and 26-1/2 in. (675 mm) dia., and may be purchased for maximum 3 in. (76 mm), 4 in. (102 mm), or 5 in. (127 mm) cables

These units are normally used in conjunction with either the GMP Pulling Frames or Cable Sheave Shackles. A GMP Sheave Pin is also used to retain the sheave to either unit. (included with the frames or shackles).



P/N	A	B	C	Weight
71723	3 in. (8 cm)	11 in. (28 cm)	8-1/2 in. (22 cm)	15 lbs. (7 kgs)
71726	4 in. (10 cm)	11 in. (28 cm)	7-7/8 in. (20 cm)	20 lbs. (9 kgs)
71729	5 in. (13 cm)	11 in. (28 cm)	6-7/8 in. (17 cm)	25 lbs. (11 kgs)
71722	3 in. (8 cm)	20 in. (51 cm)	17-1/2 in. (44 cm)	32 lbs. (15 kgs)
71725	4 in. (10 cm)	20 in. (51 cm)	16 in. (41 cm)	36 lbs. (16 kgs)
71728	5 in. (13 cm)	20 in. (51 cm)	16-1/2 in. (42 cm)	40 lbs. (18 kgs)
71721	3 in. (8 cm)	26-1/2 in. (67 cm)	24 in. (61 cm)	38 lbs. (17 kgs)
71724	4 in. (10 cm)	26-1/2 in. (67 cm)	22-1/2 in. (57 cm)	44 lbs. (19 kgs)
71727	5 in. (13 cm)	26-1/2 in. (67 cm)	23 in. (58 cm)	56 lbs. (25 kgs)
71730	6 in. (15 cm)	26-1/2 in. (67 cm)	23 in. (58 cm)	68 lbs. (31 kgs)

Cable Sheave Shackle

Use for supporting a cable sheave or quadrant block in place at a manhole equipped with pulling in irons.

- ▶ Contains a two part clevis made of high strength structural steel, with two sets of sheave pin holes 1-3/8 in. (35 mm) dia. for accommodating either a cable sheave or quadrant block
- ▶ The load half has a forged steel hook that attaches to the pulling-in irons with a standard 1/2 in. (12 mm) x 6 ft. (2 m) construction chain, (P/N 63540) while the support half has a shoulder eyebolt so you can tie it off to a support rope over the manhole
- ▶ Will accommodate any 11 in. (279 mm), 20 in. (508 mm), or 26-1/2 in. (673 mm) cable sheave with a 1-3/8 in. (48 mm) hole size for 3 in. (76 mm), 4 in. (102 mm), or 5 in. (127 mm) cable
- ▶ Each shackle includes a 1-5/16 in. (33 mm) dia. sheave pin and can withstand working loads up to 10,000 lbs. (4535 kgs). Select the right GMP Cable Sheave or Quadrant Block to accommodate your cable pulling needs, then choose a shackle from the table below to match the size.



Shackle only. Sheaves sold separately. See above for sheave ordering information, or consult the factory

P/N	Cable Size	Weight
71643	3 in. (76 mm)	32 lbs. (14 kgs)
71644	4 in. (102 mm)	75 lbs. (34 kgs)
71645	5 in. (127 mm)	90 lbs. (40 kgs)