

# 45 AND 90 DEGREE CORNER BLOCKS



**70439**  
45° Corner Block



**70438**  
90° Corner Block

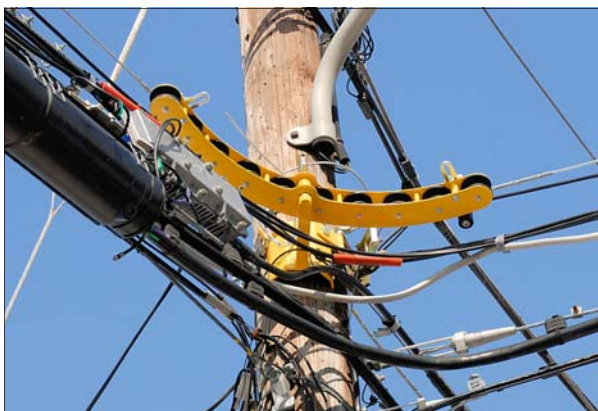


## CORNER BLOCKS 45° & 90°

- Used to guide up to 1-3/8" diameter cable on inside or outside corners.
- Offers a bending radius of 23" (584 mm).
- Mounts on Pole Bracket GMP # 70372.

### INSTALLATION PROCEDURE

1. Install Pole Bracket GMP #70372 by ratcheting until a tight fit to the pole. Attach the **safety clip** to the messenger strand after unit is attached to the pole.
2. Slide the Corner Block center **tube opening** over the **axle** of the Pole Bracket. Insert the **safety pin**, attached to the top of the block by lanyard into the axle's hole. The pin prevents Corner Block from falling off the mount and allows the block to swivel with the cable.
3. Loosen both **knobs** at top of the block to loosen the **cable retaining rollers**.
4. Set up the **cable retaining** rollers approximately ¼" above the cable to retain cable on Corner Block's rollers.
5. Reverse the installation procedure to remove the Cable Block.

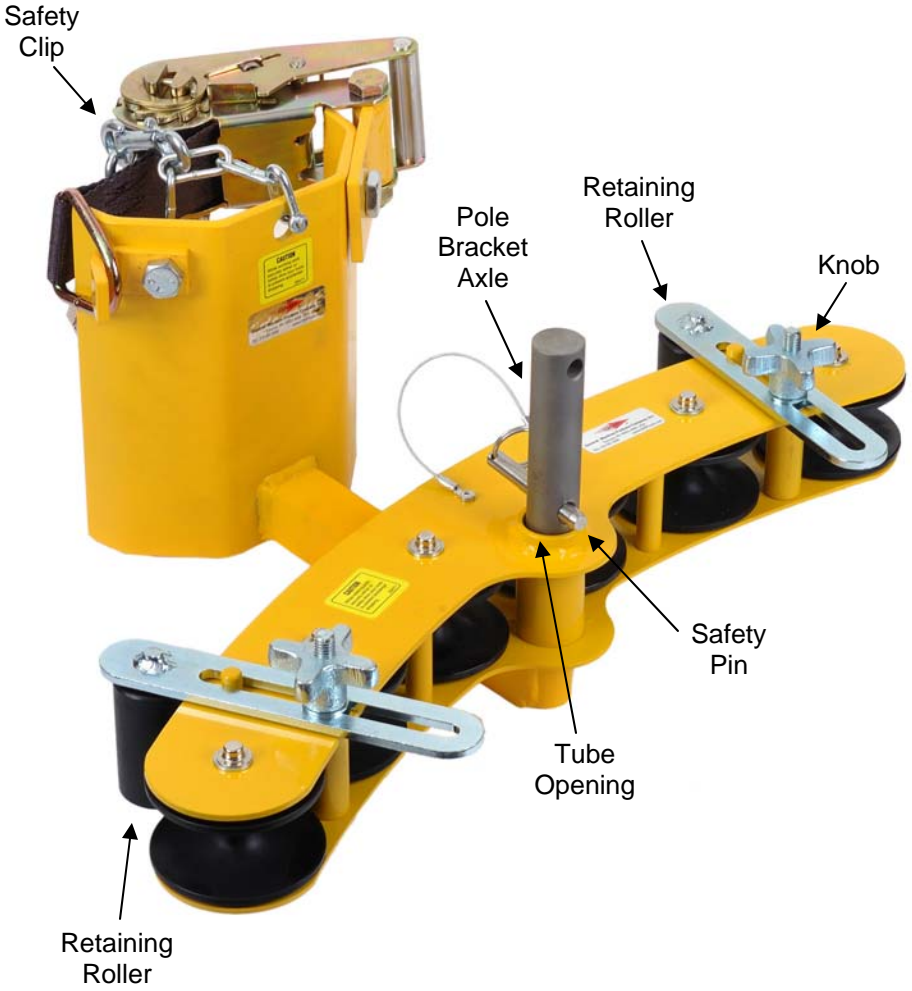


*Typical installation of the corner block*



**WARNING:** This equipment must only be used by authorized personnel who have been suitably trained and competent to do so. These instructions are to be made available to operators of this equipment at all times. Failure to observe these safety instructions could result in serious personal injury and or property damage.

Accessory Pole  
Bracket  
GMP # 70372





Visit [www.GMPtools.com](http://www.GMPtools.com) for the Tools to help you  
“get the job done right”



**J2 Cable Lasher**  
Time tested workhorse for  
up to 3" bundle



**Apollo Cable Lasher**  
Parallel-pull capability  
up to 4" bundle



**Stainless Lashing Wire**  
Highest quality lashing wire  
that's guaranteed to work with  
our lashers.



**70336 B Overlash  
Block**

This block lets you over-lash  
to cable bundles up to 2 in.  
(50 mm) across ... and its  
affordability lets you use  
more blocks for smoother,  
neater lashing on new or  
rebuild construction.



**87265 Clip-On  
Block**

This tempered  
spring steel block  
is used to support  
cable up to  
1" (2.54 cm) dur-  
ing cable pullout.



**10700 Cable  
Block with  
Aluminum  
Roller**

This economical  
block has a Alumi-  
num roller & is used  
for new strand & over  
lash work



**10701 Cable  
Block with  
Rubber Roller**

This economical  
block has a rubber  
roller & is used for  
new strand & over  
lash work

**General Machine Products Co.**

3111 Old Lincoln Highway  
Trevose, PA 19053 USA

Tel: +1.215.357.5500

Fax: +1.215.357.6216

Email: [info@GMPtools.com](mailto:info@GMPtools.com)

Web: [www.gmptools.com](http://www.gmptools.com)