

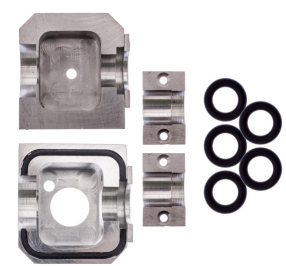


# WHISPER FLAT DROP CABLE KITS

STD PLUS

P/N	COMPONENT	STD	PLUS
<b>TUBE COLLET AND CLAMP ASSEMBLIES</b>			
<i>CHOOSE ONE SIZE BELOW FOR STANDARD WHISPER FLAT DROP</i>			
89923	12mm	1	
89921	12.7mm	1	
89928	14mm	1	
89925	16mm	1	
89924	18mm	1	
<b>CABLE KIT SEAL COLLET ASSY</b>			
<i>CHOOSE ONE SIZE DUCT SEAL BELOW FOR STANDARD WHISPER FLAT DROP</i>			
89841	Fujikura 24 ct. Drop	1	
89911	Essex	1	
89951	Corning ROC	1	
89952	Corning SST	1	
89954	Corning ROC Fast Access	1	
89956	Commscope	1	

Up to 30% savings on accessories when purchasing the Plus



Tube Collet and Clamp Assemblies

## How To Chose Your Whisper Flat Drop Component Kits

**When choosing the Standard Model:**  
 Pick 1 Tube and collet and clamp assembly  
 Pick 1 Cable seal collet assembly

**When choosing the Plus Model:**  
 Receive all components to blow the 3 most popular sizes



Cable Seal Collet Assemblies



\* Fast Access uses above cable guide half.

## Supplied With All Machines

- Whisper Flat Drop Cable Blowing Machine
- (2) 9V Lithium Batteries
- Toolkit
- Travel bag
- Manual

## Kit Part Numbers

STD: 89915  
 PLUS: 89895

GMPWhisperFlatDropBlowingMachines\_KitsComparison083122

**TOOLS BUILT TO GO THE DISTANCE**