



Visit www.GMPtools.com for the Tools to “get the job done right”



J2 Cable Lasher
Time tested workhorse for up to 3” bundle



Apollo Cable Lasher
Parallel-pull capability up to 4” bundle



Stainless Lashing Wire
Highest quality lashing wire that’s guaranteed to work with our lashers.



70336 B Overlash Block
This block lets you over-lash to cable bundles up to 2 in. (50 mm) across ... and its affordability lets you use more blocks for smoother, neater lashing on new or rebuild construction.



74050 Econo Block
This plated steel block is used to support cable up to 1” (2.54 cm) during cable pullout.



10700 Cable Block with Aluminum Roller
This economical block has a Aluminum roller & is used for new strand & over lash work



10701 Cable Block with Rubber Roller
This economical block has a rubber roller & is used for new strand & over lash work

General Machine Products
3111 Old Lincoln Highway
Trevose, PA 19053 USA
Tel: +1.215.357.5500
Fax: +1.215.357.6216
Email: info@GMPtools.com
Web: www.gmptools.com



45 AND 90 DEGREE CORNER BLOCKS

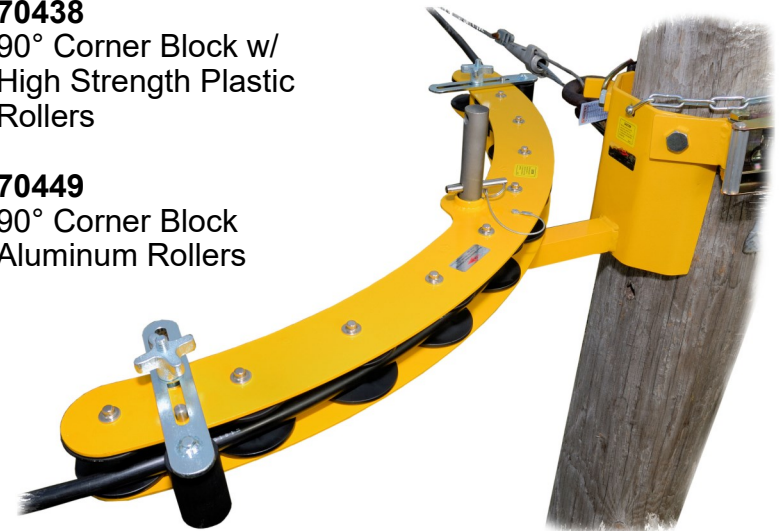


70439
45° Corner Block w/ High Strength Plastic Rollers

70450
45° Corner Block Aluminum Rollers

70438
90° Corner Block w/ High Strength Plastic Rollers

70449
90° Corner Block Aluminum Rollers

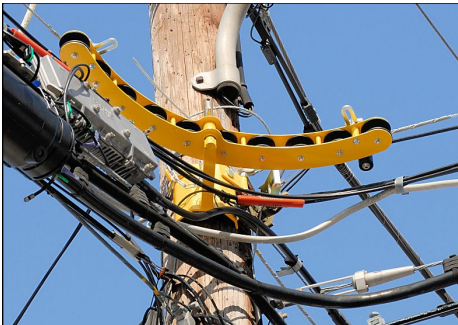


CORNER BLOCKS 45° & 90°

- Used to guide up to 1-3/8" diameter cable on inside or outside corners.
- Offers a bending radius of 23" (584 mm).
- Mounts on Pole Bracket GMP # 70372.

INSTALLATION PROCEDURE

1. Install Pole Bracket GMP #70372 by ratcheting until a tight fit to the pole. Attach the **safety clip** to the messenger strand after unit is attached to the pole.
2. Slide the Corner Block center **tube** over the **axle** of the Pole Bracket. Insert the **safety pin**, attached to the top of the block by lanyard into the axle's hole closest to the block. The pin prevents Corner Block from falling off the mount and allows the block to swivel with the cable.
3. Loosen both **knobs** at top of the block to loosen the **cable retaining rollers**.
4. Set up the **cable retaining** rollers approximately 1/4" above the cable to retain cable on Corner Block's rollers.
5. Reverse the installation procedure to remove the Corner Block.



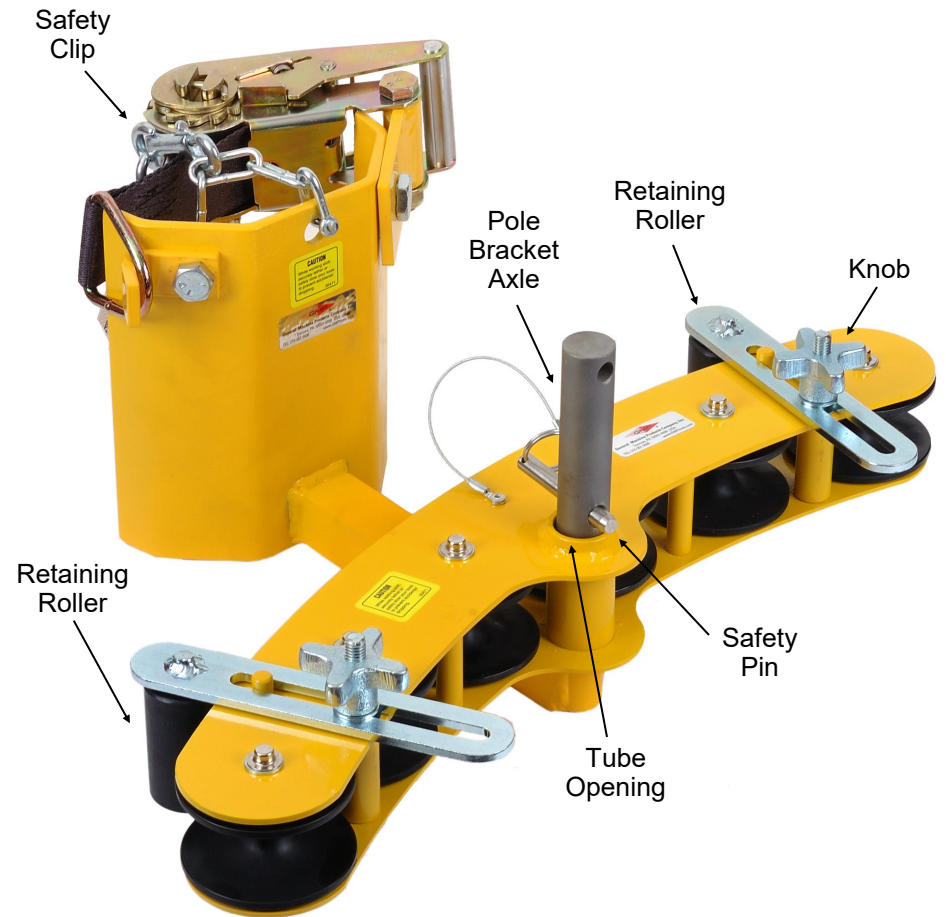
Typical installation

WARNING: This equipment must only be used by authorized personnel who have been suitably trained and competent to do so. These instructions are to be made available to operators of this equipment at all times. Failure to observe these safety instructions could result in serious personal injury and or property damage.

Optional Vertical Angle Adapter GMP # 70440 (for use with single rollers only)



Accessory Pole Bracket GMP # 70372



Specifications

	Max Load	Weight	GMP #
90° Corner Block w/HS Plastic Rollers	1000 lbs.	13 lbs. 12 oz	70438
90° Corner Block w/Aluminum Rollers	1000 lbs.	15 lbs. 14 oz	70449
45° Corner Block w/HS Plastic Rollers	850 lbs.	8 lbs. 14 oz	70439
45° Corner Block w/Aluminum Rollers	850 lbs.	10 lbs. 1 oz	70450
Pole Mount Bracket	*	12 lbs. 7 oz	70372
Vertical Angle Adapter	*	5 lbs	70440