

Whisper Microcable Blowing Machine

Now you can depend on the same GMP quality as our larger machines in a new smaller package...

The Whisper installs microcable and its versatility saves you money.

The design of the Whisper provides for quick and easy component changes for different cable or duct sizes. Its compact size and portable maneuverability make the Whisper ideally suited for either outside or in-building use.

The Whisper uses compressed air to install the cable. The drive roller, powered by most types of cordless drills (not included), control the microfiber as it is propelled into the microduct. An electronic monitoring system provides read-outs of speed and distance.

Main Features

- Installs cable diameters of 2-8.5mm
- Flat Drop compatible. Call for details
- Accommodates microduct sizes of 4-18mm
- Uses most any variable speed 3/8" drill as a power source
- Light weight, durable construction with precision machined parts
- Single person operation
- Digital cable speed and length monitoring
- Integral air valve and pressure gauge
- Low maintenance
- Ideal for smaller jobs where a bigger machine is simply too much
- Travel bag included

Specifications:

Cable Diameter:	2-8.5mm Round and various manufactures Flat Drop
Tube Size O.D.:	4-18mm
Cable Speed (Adjustable):	0-300 ft/min (0-90m/min)
Max Air Pressure:	220 psi (15 Bar)
Power Requirement:	Variable Speed Drill
Width:	8.1" (206mm)
Length:	9.7" (246mm)
Height:	8.5" (216mm)
Net Weight:	12 lbs. (5.4kg)

Accessories:



Tripod Mount
P/N 89945



Drill Stand
P/N 89948



Bottled Nitrogen Kit
P/N 89742



Whisper Air Supply Hose
P/N 89949



Unit powered by customer supplied variable speed drill



Air Compressor
P/N 89011





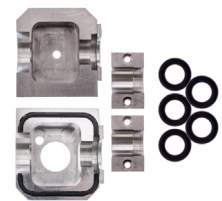
CABLE BLOWING

PLUS ROUND
PLUS FLAT
MAX

P/N	WHISPER ROUND CABLE			
DUCT CLAMP AND SEAL KIT - Round Fiber & Flat Drop				
<i>CHOOSE ONE SIZE BELOW FOR BASE WHISPER</i>				
89918	4mm O.D.	1		
89919	5mm O.D.	1		
89926	7mm O.D.	1		
89927	8mm O.D.	1		
89920	8.5mm O.D.	1		
89922	10mm O.D.	1		
89923	12mm O.D.	1		
89921	12.7mm O.D.	1		
89928	14mm O.D.	1		
89925	16mm O.D.	1		
89924	18mm O.D.	1		
CABLE KIT SEAL COLLET ASSY - Round Fiber				
<i>CHOOSE ONE SIZE DUCT SEAL BELOW FOR BASE WHISPER</i>				
89932	3.0 - 3.8mm	1		
89933	3.8 - 5.0mm	1		
89934	5.0 - 6.4mm	1		
89935	6.4 - 8.5mm	1		
CABLE KIT SEAL COLLET ASSY - Flat Drop for Base unit				
<i>CHOOSE ONE SIZE DUCT SEAL BELOW FOR BASE WHISPER FLAT DROP BASE</i>				
89841	Fujikura 24 ct. Drop	1		
89911	Essex	1		
89951	Corning ROC	1		
89952	Corning SST	1		
89954	Corning ROC Fast Access	1		
89956	Commscope	1		
FLAT DROP COMPONENTS for 89897, 90064 and 89895				
89502	SEAL COMSCOPE TONEABLE 3/PK	1		
89505	SEAL SST/COMSCOPE NON-TONE 3/PK	1		
36508	GUIDE SEAL LOWER FAST ACCESS	1		
36509	GUIDE SEAL UPPER FAST ACCESS	1		
37726	SEAL FUJIKURA 24-CT TONE 3/PK	1		
37730	GUIDE SEAL HALF FUJI 24CT DROP	2		
34671	GUIDE SEAL HALF ROC DROP FIBER	2		
36067	BLOCK BEARING DRIVE ROC DROP	2		
37265	INSERT GUIDE INF ROC WHISPER	2		
89506	SEAL CABLE ROC TONEABLE 3/PK	1		
89507	SEAL CABLE ROC NON-TONEBL 3/PK	1		
34059	GUIDE SEAL HALF SST DROP FIBER	2		
36068	BLOCK BEARING DRIVE SST DROP	2		
89504	SEAL CABLE SST TONEABLE 3/PK	1		
03055	BEARING JAF 88500	4		
34258	SCAP M3X8 SKT S/S	2		
34259	SCAP M3X25 SKT S/S	2		
34271	SCAP M2.5X6MM SK SS	2		
36065	ROLLER DRIVE STRAIGHT KNURL	1		
36066	GUIDE INFEED DROP FIBER	1		
36069	SCAP M6X25 SK SS A	2		
89910	BLOWER MICRO FIBER WHISPER	1		

FOR
CONFIGURING
BASE FLAT DROP

Round Cable



Tube Collet and Clamp Assemblies

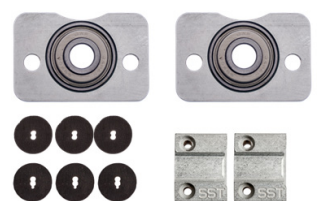


Cable Seal Collet Assemblies

Flat Drop

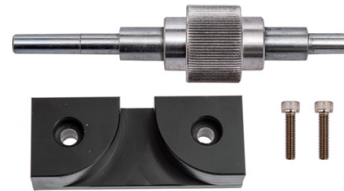


* Fast Access uses above cable guide half.



Supplied With All Machines

- Whisper Cable Blowing Machine
- (2) 9V Lithium Batteries
- Toolkit
- Travel bag
- Manual



Cable Seal Collet Assemblies

Whisper Round Fiber Part Numbers	Base: 89910
	Plus: 89897

Whisper Flat Drop Fiber Part Numbers	Base: 89915
	Plus: 89895

Whisper Max	Max: 90064
Includes everything for flat drop and round	

Up to 30% savings on accessories when purchasing the Plus or Max

How To Chose Your WHISPER Component Kits

When choosing the Plus Model: (included in price)
Receive all components to blow the 3 most popular sizes round and flat drop

When choosing the Max Model: (included in price)
Nothing to pick, you'll receive one of everything for round and flat drop

How To Chose Your Whisper Flat Drop Component Kits

When choosing the Plus Model: (included in price)
Receive all components to blow the 3 most popular sizes