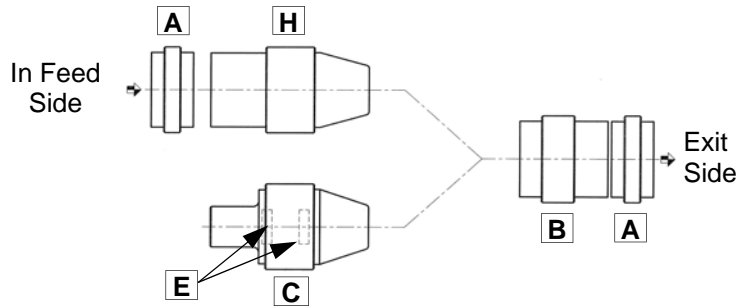


GMP "Y" Box Configuration for Cable Blowing

Let our "Cable Blowing Experts" tailor your configuration. Please don't hesitate to call our Hotline at **1-800-345-6009** for any questions you may have.

Locator	Description	Qty needed
(A)	Duct Clamp	2 (2 halves)
(B)	Duct Seal	1 (2 halves)
(C)	Cable Collet	1 (2 halves)
(E)	Cable Seals	1 (pkg of 10)
(H)	Junction Box Duct Seal	1 (2 halves)

In order to configure your "Y" (Junction) Box to work with your specific cable requirements you must select items below that match your duct and cable size at additional charge



Junction Box Setup Diagram



How to specify the collets and seals to match your cable and duct size .

1. Select two (2) Duct Clamps (locator A) that represent the **inside diameter** of the duct that you're using at feed and exit.
2. Select one (1) Duct Seal (locator B) that represents the **inside diameter** of the duct that you're using at exit.
3. Select the Cable Collet (locator C) that match your cable size.
4. Select the Cable Seals (locator E) that match your cable size.
5. Select one (1) Junction Box Duct Seal (locator H) that represents the inside diameter of the feed duct that you're using.

Note: Clamps and Seals are colored for illustration and identification purposes' only

(Loc A) DUCT CLAMPS (1.00-2.00") (I.D.)

89021	DUCT CLAMP 1"
89041	DUCT CLAMP 1.25"
89061	DUCT CLAMP 1.50"
89071	DUCT CLAMP 2"



(Loc B) DUCT SEALS (1.00-2.00") (I.D.)

89022	DUCT SEAL 1"
89042	DUCT SEAL 1.25"
89062	DUCT SEAL 1.50"
89072	DUCT SEAL 2"



(Loc C) CABLE COLLETS (6-28 MM)

89081	6-9 MM (.23 - .35")
89083	9-12 MM (.35 - .47")
89091	12-16 MM (.47 - .63")
89092	16-20 MM (.63 - .79")
89101	20-24 MM (.79 - .95")
89102	24-28 MM (.95 - 1.10")



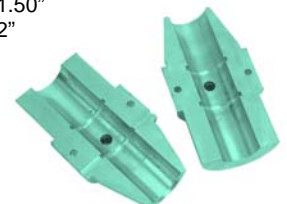
(Loc E) CABLE SEALS (6-28 MM)

89085	6-7.5 MM (.23 - .29") 10/PK
89086	7.5-9 MM (.29 - .35") 10/PK
89087	9-10.5 MM (.35 - .41") 10/PK
89088	10.5-12 MM (.41 - .47") 10/PK
89093	12-14 MM (.47 - .55") 10/PK
89094	14-16 MM (.55 - .63") 10/PK
89095	16-18 MM (.63 - .71") 10/PK
89096	18-20 MM (.71 - .79") 10/PK
89103	20-22 MM (.79 - .87") 10/PK
89104	22-24 MM (.87 - .95") 10/PK
89105	24-26 MM (.95 - 1.02") 10/PK
89106	26-28 MM (1.02 - 1.10") 10/PK



(Loc H) JUNCTION BOX DUCT SEAL

89050	Duct Seal Junction Box 1"
89051	Duct Seal Junction Box 1.25"
89052	Duct Seal Junction Box 1.50"
89053	Duct Seal Junction Box 2"



General Machine Products (KT), LLC 3111 Old Lincoln Highway Trevose, PA
19053-4996 USA Tel: +1.215.357.5500 Fax: +1.215.357.6216 Email: info@GMPtools.com