



FIBER BLOWING WORKSTATION

Assembly



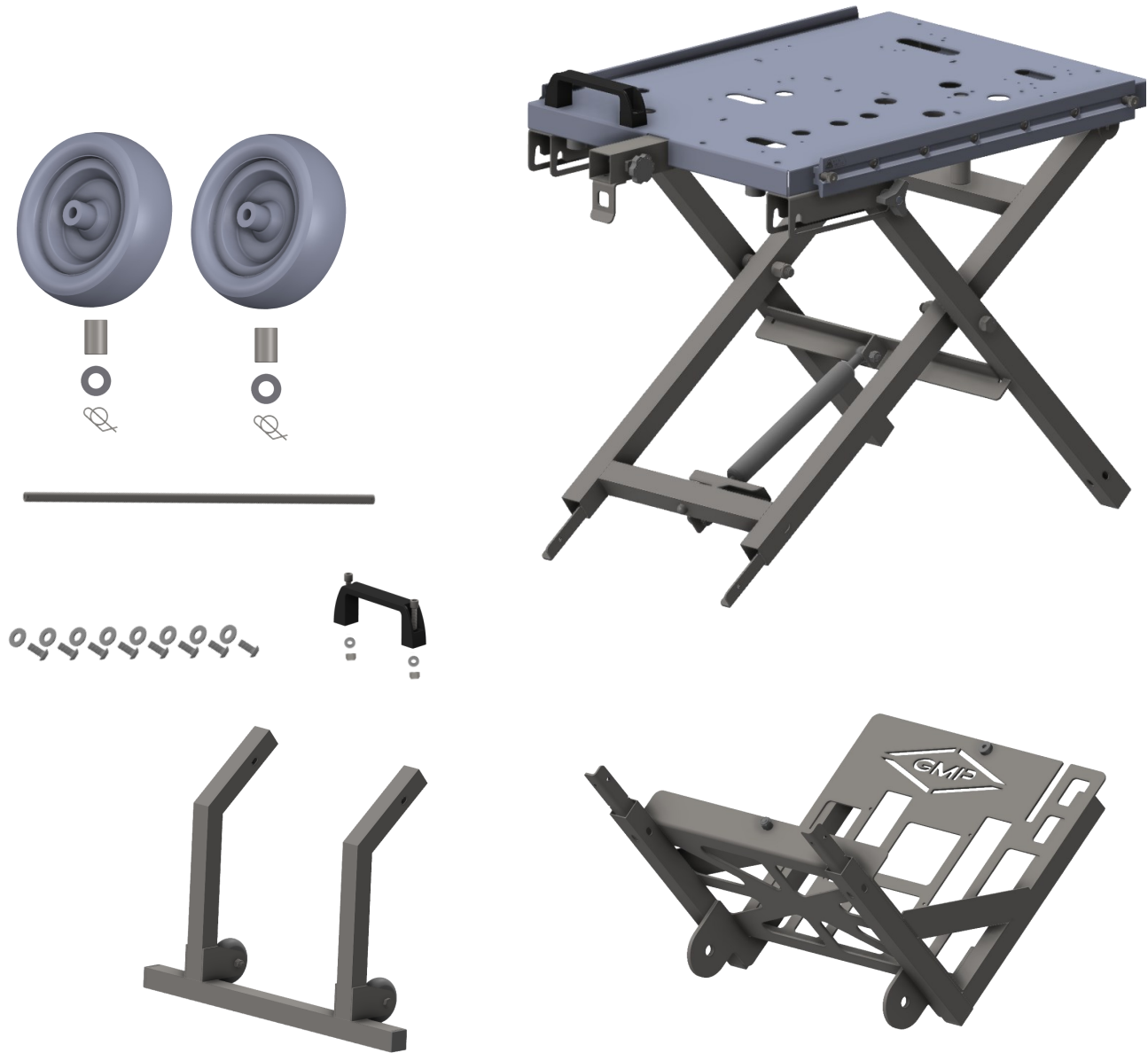
Model 71075

All rights reserved. No part of this publication may be copied, reproduced or transmitted in any form whatsoever without the written permission of General Machine Products (KT), LLC

General Machine Products (KT), LLC • 3111 Old Lincoln Hwy • Trevose, PA 19053 • USA
TEL: +1-215-357-5500 • FAX: +1-215-357-6216 • WEB: www.gmptools.com

Manual P/N xxxx Ver 01
12/08/2025 AKK

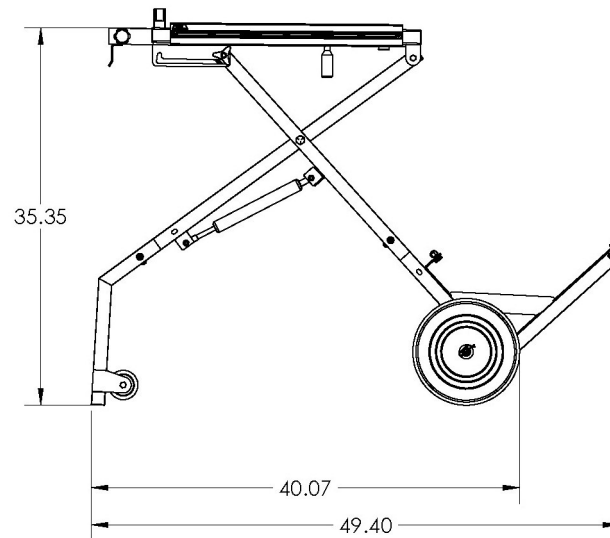
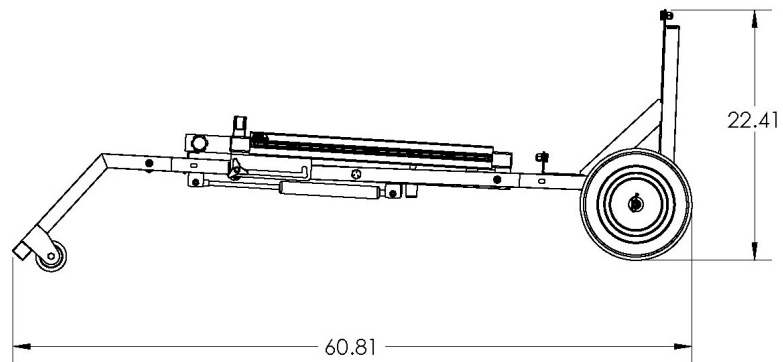
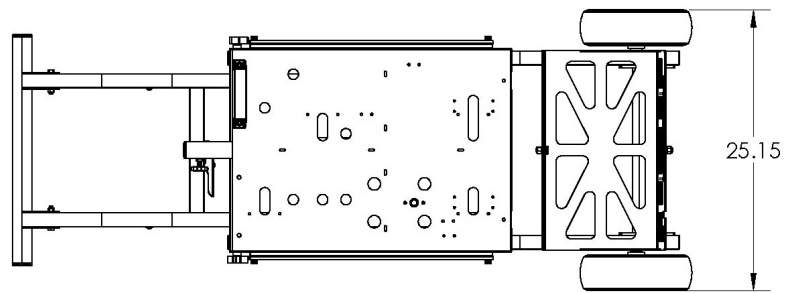
Parts List



WATCH THE VIDEO



FIBER BLOWING WORKSTATION
ASSEMBLY

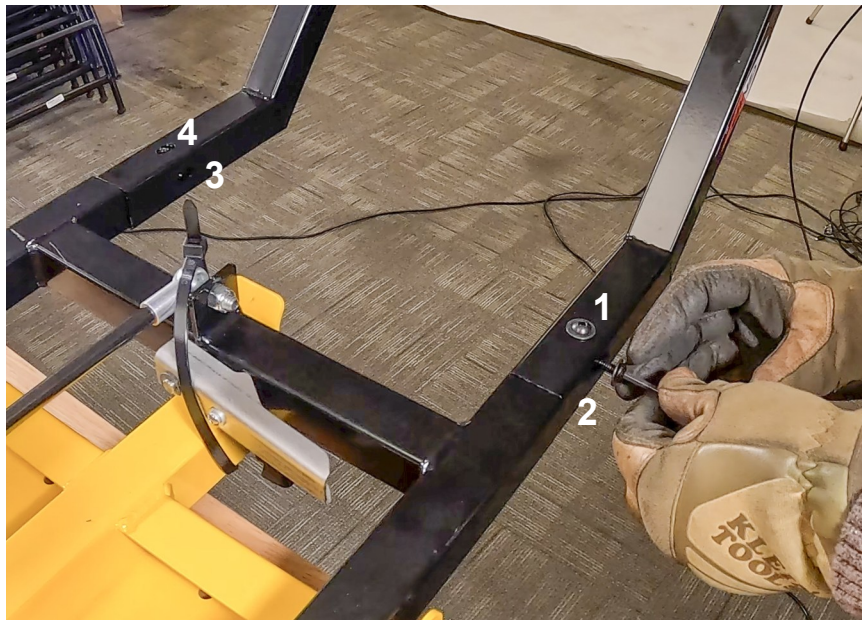


1



Place the table with the face down. Slide the base legs over the support extensions as shown.

2



Attach the base to the support with four 1/4x20 button head screws and flat washers in the order shown in the photo.

3



Slide the battery support over the support extensions as shown.

4



Attach the base to the support with two 1/4x20 button head screws and flat washers only on one side.

5



Cut the tie wrap holding the platform

6



Loosen the large plastic locking nuts, squeeze the release handle and raise the legs a few inches

7



Install the last 2 screws and washers and tighten

8



Tread the axle trough the 2 loops

9



Place the spacers over each end of the axle

10



Slide on the wheel, long hub in

11



Place the flat washer over the axle against the wheel

12



Insert retaining pin. Repeat on other side

13



You can place the handle on either side. Insert the screws through the handle and secure with locknuts.

14



