



Visit [www.GMPtools.com](http://www.GMPtools.com) for the Tools to “get the job done right”



### J2 Cable Lasher

Time tested workhorse for up to 3" bundle



### Apollo Cable Lasher

Parallel-pull capability up to 4" bundle



### Stainless Lashing Wire

Highest quality lashing wire that's guaranteed to work with our lashers.



### 70336 B Overlash Block

This block lets you over-lash to cable bundles up to 2 in. (50 mm) across ... and its affordability lets you use more blocks for smoother, neater lashing on new or rebuild construction.



### 87265 Clip-On Block

This tempered spring steel block is used to support cable up to 1" (2.54 cm) during cable pullout.



### 10700 Cable Block with Aluminum Roller

This economical block has a Aluminum roller & is used for new strand & over lash work



### 10701 Cable Block with Rubber Roller

This economical block has a rubber roller & is used for new strand & over lash work

### General Machine Products

3111 Old Lincoln Highway  
Trevose, PA 19053 USA

Tel: +1.215.357.5500

Fax: +1.215.357.6216

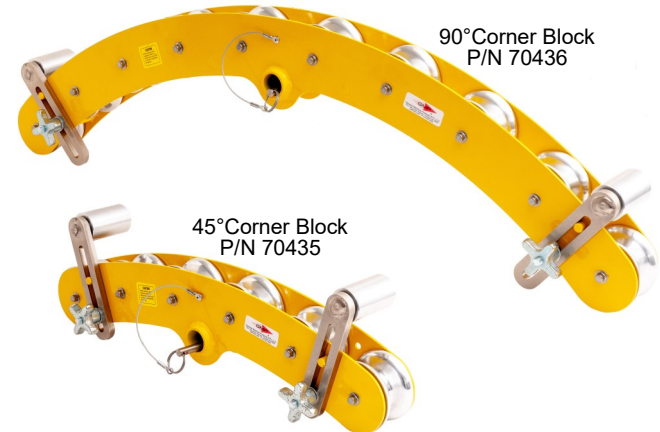
Email: [info@GMPtools.com](mailto:info@GMPtools.com)

Web: [www.gmptools.com](http://www.gmptools.com)

## USER MANUAL



## 45 AND 90 DEGREE HEAVY DUTY CORNER BLOCKS



90° Corner Block  
P/N 70436

45° Corner Block  
P/N 70435



Combination  
90° Corner Block/Bracket  
P/N 70462



Combination  
45° Corner Block/Bracket  
P/N 70437



Pole Mounting Bracket  
P/N 70550



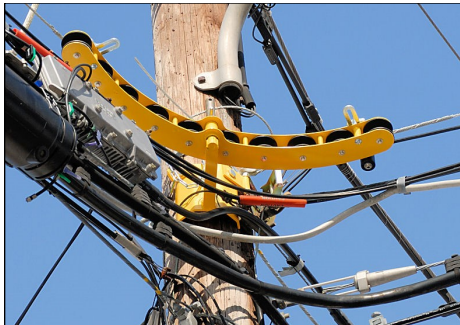
General Machine Products (KT), LLC • 3111 Old Lincoln Hwy • Trevose, PA 19053 • USA  
TEL: +1-215-357-5500 • FAX: +1-215-357-6216 • EMAIL: [info@gmptools.com](mailto:info@gmptools.com)

## HEAVY DUTY CORNER BLOCKS 45° & 90°

- Used to guide up to .688" diameter (Fiber Optic) cable on inside or outside corners.
- Offers a bending radius of 23" (584 mm).
- Mounts on Pole Bracket GMP # 70550.

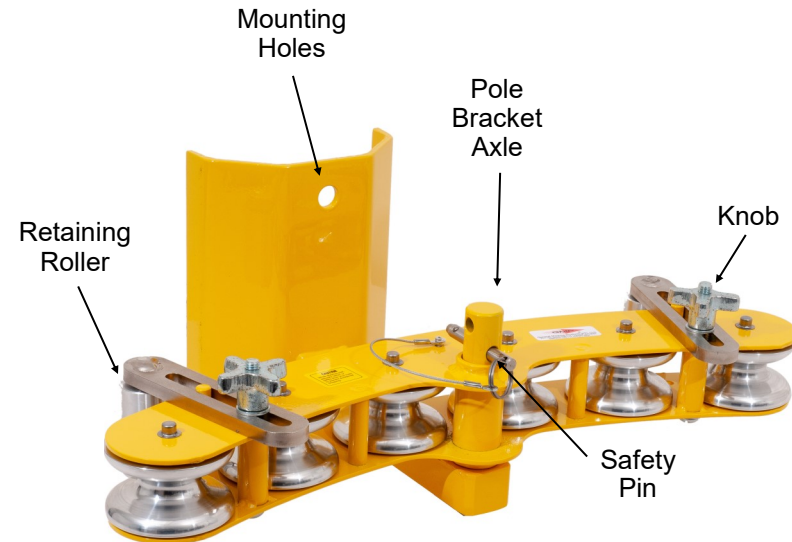
### INSTALLATION PROCEDURE

1. Mount the Pole Bracket GMP #70550 using the 2 mounting holes with suitable hardware following your company practices.
2. Slide the Corner Block center **tube** over the **axle** of the Pole Bracket. Insert the **safety pin**, attached to the top of the block by lanyard into the axle's hole closest to the block. The pin prevents Corner Block from falling off the mount and allows the block to swivel with the cable.
3. Loosen both **knobs** at top of the block to loosen the **cable retaining rollers**.
4. Set up the **cable retaining** rollers approximately ¼" above the cable to retain cable on Corner Block's rollers.
5. Reverse the installation procedure to remove the Corner Block.



Typical installation of a corner block

**WARNING:** This equipment must only be used by authorized personnel who have been suitably trained and competent to do so. These instructions are to be made available to operators of this equipment at all times. Failure to observe these safety instructions could result in serious personal injury and or property damage.



### Specifications

	Working Load Limit	Weight	GMP #
90° Corner Block w/Aluminum Rollers	750 lbs.	20.8 lbs.	70436
45° Corner Block w/Aluminum Rollers	750 lbs.	13.4 lbs.	70435
Pole Mount Bracket	750 lbs.	11.5 lbs.	70550