

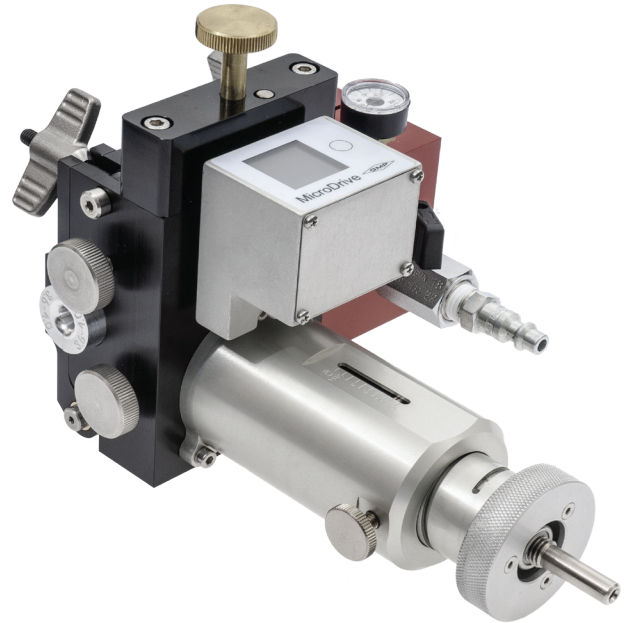
MicroDrive Cable Blowing Machine

With the new GMP MicroDrive, placing Optical fiber couldn't be safer and easier. Built with simplicity and reliability in mind, this blower is driven by an off-the-shelf battery powered drill. Coupled with the driven roller is a precision clutch which you can dial in to your custom torque settings.

The MicroDrive offers battery powered cable speed and distance counter along with a family of useful accessories.

Main Features

- Installs cable diameters of 0.142", 0.150", 0.177" (3.6, 3.8, 4.5mm)
- EABF® compatible
- Accommodates microduct sizes of (OD) 0.335", 0.500" (8.5, 12.7mm)
- Uses most any variable speed 3/8" drill as a power source
- Precision magnetic clutch helps to protect your cable
- Light weight, durable construction with precision machined parts
- Single person operation
- Digital cable speed and length monitoring
- Integral air valve and pressure gauge
- Low maintenance
- Ideal for smaller jobs where a bigger machine is simply too much
- Heavy duty hard case included



Order: P/N 89850
MicroDrive Blown Fiber Blowing Machine
Weight: 6 lbs. (3.1kg)

Specifications:

Cable Diameter:	0.142", 0.150", 0.177" (3.6, 3.8, 4.5mm)
Tube Size (Outside Dia):	(OD) 0.335", 0.500" (8.5, 12.7mm)
Cable Speed (Adjustable):	0-300 ft/min (0-90m/min)
Max Air Pressure:	220 psi (15 Bar)
Power Requirement:	Variable Speed Drill with adjustable torque
Width:	9.7" (248mm)
Length:	5.6" (143mm)
Height:	6.6" (169mm)
Net Weight:	6 lbs. (3.1kg)



Supplied with a durable waterproof crushproof case

ACCESSORIES



Air Supply Hose

- Quickly connects to the Whisper via a quick coupling.
- Hose is 12 1/2 feet long for easy setups.
- The flexible hose is abrasion, weather and ozone resistant.
- Inlet connection is a two claw Chicago coupling.

P/N 89949 Weight: 2 lbs. (.9kg)



Tripod Mount Kit

- Lightweight and durable
- Positive locking clamps
- Aluminum alloy construction
- Flat Head design
- Easy Setup
- Built in shoulder strap
- Folds for storage
- Max work height 63" (160 cm)

P/N 89945 Weight: 9 lbs. (4.1kg)