



**REEL RUNNER™
P/N 5000**
OPERATION AND MAINTENANCE MANUAL



REEL***RUNNER***

BOLT-ON ELECTRIC REEL DRIVE SYSTEM

Copyright 2026 by General Machine Products (KT), LLC All rights reserved. No part of this publication may be copied, reproduced or transmitted in any form whatsoever without the written permission of General Machine Products (KT), LLC



General Machine Products (KT), LLC.
3111 Old Lincoln Hwy • Treose, PA 19053 • USA TEL:
+1-215-357-5500 • www.gmptools.com

Reel Runner.indd ver 2 051526
Manual P/N 01398

REVISION HISTORY

REV #	DATE	DETAILS	AUTHOR
01	05/15/25	Original Publication	J. Himes

1.0 General Information

The GMP ReelRunner™ Bolt-On Electric Reel Drive System is a battery-powered reel drive designed to assist with cable payout from standard non-powered reel trailers. The system mounts to the trailer frame and drives the reel directly using a powered wheel assembly, reducing the manual effort typically required to turn large cable reels.

The ReelRunner may also be used to spool loose cable back onto a reel when job conditions allow. In some applications, the system may also be suitable for light-duty pulling tasks. However, the ReelRunner is primarily intended for controlled reel rotation during cable payout and take-up.

The ReelRunner system includes a motor assembly, base assembly, battery, power cable, charger, battery mounting hardware, and wireless remote control components. The motor assembly mounts to the base assembly, and the base assembly mounts to the trailer using the permanent mounting channel and supplied hardware.

The system uses a rechargeable 48V, 40Ah LiFePO4 battery and a wireless remote for start, stop, speed adjustment, and directional control during operation.

Important Precautions

1. Read and understand all safety instructions, warnings, and procedures before using the ReelRunner.
2. The ReelRunner is not designed for, nor intended to be used for, lifting or hoisting. Never use the ReelRunner to lift, suspend, or support loads.
3. The base assembly must be mounted using the attached permanent mounting channel and the provided hardware.
4. Use caution around rotating reels, wheels, shafts, and other moving components. Keep hands, loose clothing, hair, and tools away from rotating elements during operation.
5. Remove the motor assembly and battery before transporting the trailer.
6. Observe all product safety labels and markings before and during use.

Table of Contents

1. General Information	2
2. General Safety Precautions.	4
3. Technical Specifications ..	5
4. Components Included with the ReelRunner	5
5. Optional Accessories	5
6. Overall Dimensions	6
7. Key Features	6
8. Setup and Operation	7
9. Charging and Care of Battery	16
10. Maintenance Considerations and Storage	18
11. Troubleshooting	19

2.0 General Safety Precautions

1. Maintain clear communication with all crew members during setup and operation.
2. Keep all personnel clear of rotating reels, wheel assemblies, trailer components, and cable path hazards.
3. Do not wear loose-fitting clothing, jewelry, or other items that may become entangled in moving equipment.
4. Keep hands and fingers away from pinch points, rotating components, and the contact area between the drive wheel and reel flange.
5. Verify that the base assembly is securely mounted to the trailer before installing or operating the motor assembly.
6. Always confirm that both emergency stop devices are in the up position before powering on the system.
7. Remove power from the system before making adjustments, service repairs, or preparing the unit for transport.
8. Never transport the trailer with the motor assembly installed.
9. Use only approved battery, charger, and related electrical components supplied by GMP or specified in this manual.
10. Use sound jobsite judgment at all times. Reel condition, shaft condition, trailer condition, and cable loading can all affect system performance.

3.0 Technical Specifications

Drive System Type: Battery-powered reel drive system

Primary Application: Cable payout from non-powered reel trailers

Secondary Application: Spooling loose cable back onto reel

Battery Type: LiFePO4

Battery Size: 48V, 40Ah

Charge Time: Approximately 5 hours with 8A charger

Maximum Wheel Speed: Up to 125 RPM with 12 in drive wheel

Approximate Traction Force: 125 lbs

Trailer Compatibility: Structural tubing from 2 in x 2 in to 2 in x 6 in; angle iron members may be adapted with blocking

Reel Diameter Capacity: Up to 8 ft diameter

Reel Construction: Suitable for steel or wood flanged reels

Reel Weight Capacity: Capable of driving reels weighing several thousand pounds depending on reel diameter, load distribution, shaft condition, and related field conditions

Motor Assembly Position Range: 3 in to 12 in from inside edge of trailer frame

Operating Noise: Nearly silent operation

Runtime: Application dependent; field use has demonstrated full-day operation on a single charge in many installations

4.0 Components Included with the ReelRunner

Motor Assembly P/N 01270

Base Assembly P/N 01302

Battery, 48V 40Ah P/N 71492

Power Cable P/N 71494

Battery Charger, 48V 8A P/N 71495

Wireless Transmitter P/N 70016

Wireless Receiver P/N 70017

5.0 Optional Accessories

Battery Bracket Kit P/N 50001

Replacement Wheel P/N 01389

Speed Control Foot Pedal P/N 71800

Speed Control Trigger P/N 71493

Battery Charger, 48V 15A P/N 71496

Accessory Kit P/N 50003

6.0 Overall Dimensions

Height: 17 in. (432mm)

Width: 19 in. (483mm)

Length: 24 in. (610mm)

Weight: 100 lbs.(Combined)

7.0 Key Features

- Attaches to standard non-powered cable reel trailers
- Converts existing trailer assets into a powered reel system
- 12 in. horizontal travel for setup adjustment
- Dual-side mounting capability
- Force indicator for visual traction adjustment
- Durable airless drive wheel
- 48V / 40Ah LiFePO4 battery system
- Wireless remote operation for safer and more flexible jobsite control
- Quiet operation for improved communication on the jobsite
- One unit can be used across multiple trailers with proper mounting hardware

8.0 Setup and Operation

8.1 Initial Setup of the Base Assembly

The ReelRunner can be mounted on either side of your trailer. Before installation, decide which side you will mount the unit on.

The base clamping screws should always face outward, away from the reel.

To switch the clamping screws to the opposite side, unscrew each clamping screw until the detented swivel pad comes off. Then thread the screw into the opposite side and reinstall the swivel pad.



Swivel pad removal



Swivel pad installation

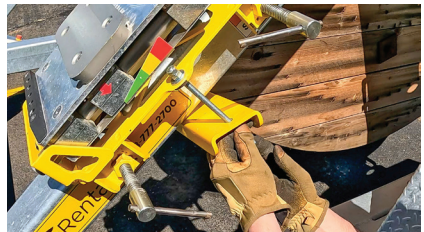
8.2 Mounting the Base Assembly

1. Ensure the tension adjuster is all the way open and the side clamps are backed out far enough to fit the trailer frame.
2. Secure the base assembly to the trailer frame using the hand clamps. Tighten just enough to secure its position.



Position the base assembly so that the edge of the reel aligns within the “ALIGN EDGE OF REEL THIS ZONE” label. (see photo B)

3. Confirm that the tension adjusting nut is positioned at the top and the 2 side clamps are located away from the reel. If the ReelRunner is used on the other side of the trailer, install the clamps on the other side of the bracket. If the assembly is installed upside down or with the reel-edge side facing away from the reel, proper tensioning and force indication will not occur.
4. Install the permanent mounting channel and provided mounting hardware.
5. Securely tighten the base assembly with the clamps and insure that the base is rigidly attached and flat against the trailer before proceeding.



8.3 Battery Bracket (Optional) and Battery Installation

1. Install the battery bracket kit using the provided hardware.
2. Place the battery in the bracket.
3. Secure the battery using the supplied ratchet strap.
4. Verify that the battery is restrained and will not shift during operation.



8.4 Installing the Motor Assembly

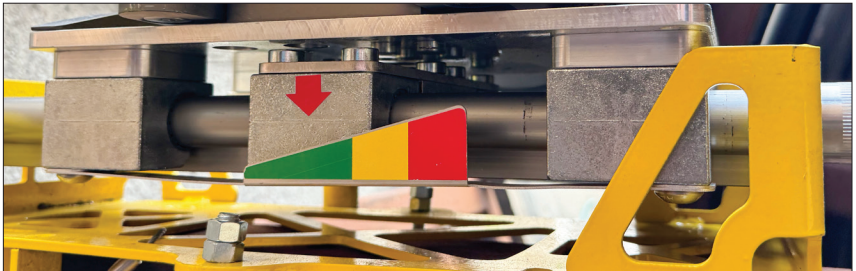
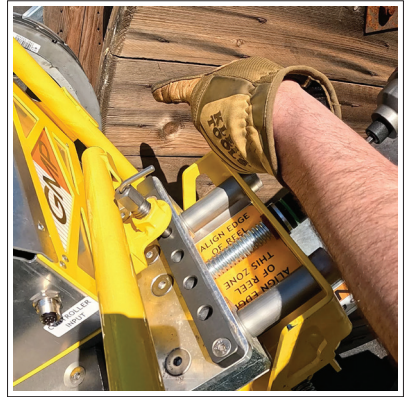
1. Install the motor assembly onto the base assembly.



2. Select the motor assembly position using the adjustment pin on the side of the base assembly.
3. The motor assembly may be positioned for reel frame locations from 3 in to 12 in from the inside edge of the trailer.
4. Confirm that the motor assembly is fully seated and locked before applying tension.

8.5 Tensioning the Drive Wheel Against the Reel

1. Using the supplied wrench, or an impact with a 3/4 in socket, advance the motor assembly along the base until the drive wheel contacts the reel.
2. Continue tightening until the force indicator arrow is within the green or yellow region.
3. Increase tension further only as traction requires.
4. Do not over-tighten beyond what is necessary for positive drive.



8.6 Understanding the Force Indicator

1. The ReelRunner base assembly includes a visual force indicator to assist with wheel tension setup. As the motor assembly is advanced into the reel, the spring-loaded base responds to wheel loading and the indicator arrow moves across the color scale.
2. **Green Zone:** Recommended starting range for typical operation
3. **Yellow Zone:** Increased contact force for more demanding traction conditions
4. **Red Zone:** Excessive tension; use only with caution and only if required by the application

Reel diameter irregularities may cause normal indicator movement during operation.

8.7 Electrical Connections and Power-Up

1. Connect the power cable between the battery and the motor assembly.



Unit connector



Battery side connector

2. Connect the wireless receiver.



Wireless receiver



Plug into controller jack

3. Ensure that the emergency stop on the battery and the motor assembly is in the up position.



Battery eStop Unit eStop

4. Press the power button on the ReelRunner motor.



8.8 Wireless Remote Operation

The ReelRunner is operated by the wireless transmitter. The receiver has no operator buttons.

1. Press and hold the remote power button for 3 seconds to turn on the remote.



2. If the remote is not paired with the receiver, the speed LED array will scroll. To initiate pairing, press and hold the FWD and REV direction buttons together for 3 seconds.



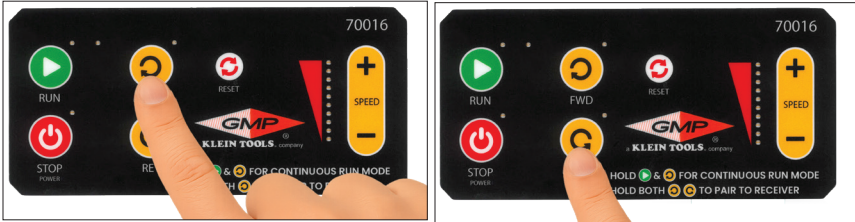
3. When pairing is successful, the speed LED array will flash.

Only one remote may be paired to the system at a time.

Loss of signal will stop operation. The ReelRunner will not restart automatically after signal loss. When back in range of the receiver, press run to resume the operation.

8.9 Speed and Direction Control

Select the desired direction for cable payout or take-up as required by the reel mounting orientation and cable wrap direction. Verify correct reel rotation before beginning full operation.



Note: the direction is dependent on the side of the reel the ReelRunner is mounted and the direction the cable is wound on the reel.

Adjust speed using the speed increase and decrease controls. Speed changes in 2% increments for each push of the button. Hold down for continuous increase/decrease.



8.10 Continuous Run Mode

The remote includes a continuous run feature for applications where momentary button control is not preferred.

1. Press and hold the desired direction button and the RUN button together for 3 seconds.



2. The indicator light located between the RUN button and the direction button will illuminate to show that continuous run mode is active.



3. While in continuous run mode, speed may still be adjusted.
4. Press any button other than a speed adjustment button to stop continuous run.

8.11 Reset and Turning Off Remote

The reset button will disconnect the power from the unit and effectively turn off the unit. To use the remote after a reset you must re-pair it with the receiver. Use this button if you are experiencing any issues that may effect the connection with the receiver or operation of the Reel Runner.



When you hold the stop/power button for 3 seconds, you'll turn off the unit but it will retain the pairing with the receiver.



8.12 Normal Operation

1. Complete all mounting, tensioning, and electrical connections.
2. Confirm that both emergency stops are in the up position.
3. Power on the system and remote.
4. Pair the remote if necessary.
5. Select the required operating direction.
6. Adjust speed as needed.
7. Begin operation and monitor reel rotation, cable payout, and wheel traction at all times.
8. If wheel slip occurs, stop operation and increase wheel tension as needed.
9. If conditions change during operation, stop the unit and make adjustments before resuming.

8.13 Shutdown and Transport Preparation

1. Stop the unit using the remote or emergency stop as required.
2. Turn off the remote and system power.
3. Disconnect the power cable and receiver.
4. Remove the motor assembly from the base assembly.
5. Remove the battery from the trailer.
6. Transport the trailer only after the motor assembly and battery have been removed.

9.0 Charging and Care of Battery

1. Charge only above 32°F (0°C)
2. LiFePO₄ batteries can be continually discharged to 100% depth of discharge with no long-term effect. However, GMP recommends discharging only to approximately 80% to maintain battery life.
3. Use only the battery charger provided by the manufacturer or specified in this manual. Use of non-recommended chargers may cause improper charging and damage the battery.
4. LiFePO₄ batteries are designed for opportunity charging. Charge the battery whenever practical in shallow cycles. Shallow cycle charging is better than rapid charging or repeated deep cycle charging.
5. Charging is possible with the second port on the battery with the tool connected.

When to Charge Your LiFePO4 Battery

If the battery is not fully discharged, it does not need to be charged after every use. LiFePO4 batteries are not damaged when left in a partial state of charge. The battery may be charged after each use or when it has been discharged to approximately 80% depth of discharge.

If the battery management system disconnects the battery due to low voltage, remove the load and charge the battery immediately.

GMP recommends storing batteries at approximately 50% state of charge.

Temperature Considerations

At low temperatures, battery performance may be reduced. At high temperatures, battery life may also be reduced. For best performance and lifespan, store the battery in a cool, dry location and avoid prolonged exposure to extreme temperatures.

LiFePO4 batteries should ideally be kept between 68°F and 122°F when practical. For long-term storage, store indoors in a cool, dry place.

If the battery is stored for a long period, cycle the battery at least once every six months. Do not store the battery in a discharged condition.

Storage temperature for LiFePO4 batteries is 23°F to 95°F (-5°C to 35°C). For storage longer than 3 months, the recommended range is 32°F to 77°F (0°C to 25°C).

Operating temperature range for LiFePO4 batteries is -4°F to 131°F (-20°C to 55°C).

10.0 Maintenance Considerations and Storage

- Inspect the drive wheel regularly for buildup, wear, or damage. Clean the wheel as required and replace it when necessary.
- Keep the base assembly clean and free of mud, debris, cable residue, and other contaminants.
- The sliding elements of the base assembly are dry-running plastic and do not require lubrication.
- Inspect the central Acme screw periodically and apply anti-seize compound or grease as needed.
- Keep all nuts, bolts, pins, clamps, and mounting hardware tight and in safe working condition.
- Disconnect the battery before making repairs, adjustments, or preparing the system for long-term storage.
- Store the ReelRunner in a protected dry space away from extreme temperature variations.
- Remove the motor assembly and battery for transport and long-term storage.
- The wireless transmitter uses rechargeable lithium-ion batteries. Replacement batteries are supplied in the storage container, which also functions as a charger.

11.0 Troubleshooting

Unit does not power on

- Verify battery charge level.
- Verify that the power cable is fully connected.
- Confirm that both emergency stop devices are in the up position.
- Inspect connectors for damage or contamination.

Remote will not pair

- Verify that the system is powered on.
- Confirm that the remote is charged.
- Press and hold both direction buttons for 3 seconds to initiate pairing.
- Confirm that only one remote is being used with the system.

Unit stops unexpectedly

- Loss of wireless signal will stop operation.
- Inspect the operating area for interference or excessive range.
- Verify that the emergency stop devices have not been activated.
- Check battery condition and cable connections.

Wheel slips on reel

- Increase drive wheel tension as needed.
- Confirm that the force indicator is within the green or yellow range.
- Inspect the reel surface for moisture, contamination, or damage.
- Verify that the base assembly is correctly oriented with the EDGE OF REEL THIS ZONE side toward the reel.

Tensioning does not operate correctly

- Verify that the base assembly is not installed upside down.
- Confirm that the reel-edge label side is facing the reel.
- Inspect the spring-loaded mechanism for obstruction or contamination.

Poor runtime

- Recharge the battery fully.
- Use opportunity charging between tasks when possible.
- Consider ambient temperature and load conditions.
- Inspect for excessive drag in the reel, shaft, or trailer setup.



GMP • 3111 Old Lincoln Hwy • Trevose, PA 19053 • USA
TEL: +1-215-357-5500 • www.gmptools.com